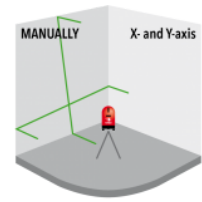
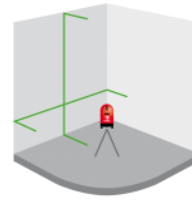




## SATURN 2.0 GREEN



Pocket laser with 1 green horizontal and 1 vertical line. Pendulum levelling accurate to 2 mm/10 m with a range of 50 m with receiver (option).

#### Main specifications

Visibility	
Precision	2mm / 10m
Range (with receiver)	50m
Dust- and water resistance	IP54
Batteries	Li-ion battery 2200mAh, 7.4V
AC power connector	✓
Levelling	Pendulum levelling

#### Power supply and batteries

Batteries	Li-ion battery 2200mAh, 7.4V
AC power connector	✓
Charger integrated into AC power connector	✓

DxWxH device	105 x 60 x 95 mm
Weight of device	0,42 kg
DxWxH box	198 x 257 x 191 mm
Weight box	1,28 kg

#### Detailed specifications

Plumb bob	✗
Number of laser dots per line	0
Number of 90° angles	0
Number of 45° angles	0
Rotations per minute	Not applicable
Scan function	✗
Wind function	✗
Tilt function	✗
Self-levelling range	±3,5°
Slope function	Manual
Maximum settable slope (X-axis/Y-axis)	+/- 45°
Remote control	✗
Built-in screw for tripod	1/4"
Pendulum lock (for manual slopes)	✓
Transport security for the pendulum	✓
Number of laser diodes	2
Laser frequency (in receiver mode)	10KHz
Laser class	Class 2 - 520NM - <1mW
Dust and water tightness	IP54

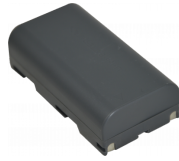
## IN THE BOX



011.20G



180.20



H60028



H60033

## ACCESSORIES

### Tripods



091.150

Tripod Light Duty 150cm  
- Tilting head - 1/4



130.01

Tripod adapter 1/4"

### Receivers



150.40.M

Quattro MM

### Wall mounts



130.08

Wall mount with clamp  
and magnet 1/4"



130.09

Wallclamp with 3D head  
1/4"