

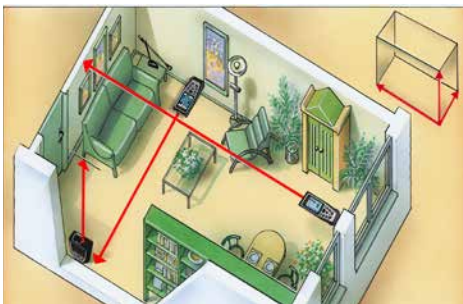
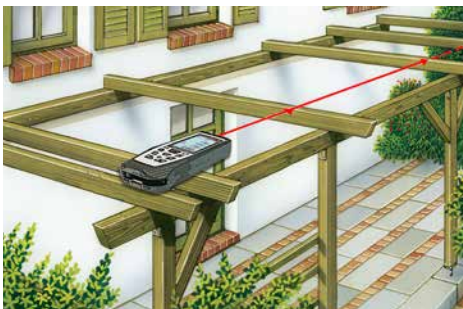
# Laserliner

## DistanceMaster Vision



### Laser distance meter – with camera function

Rev18/W25

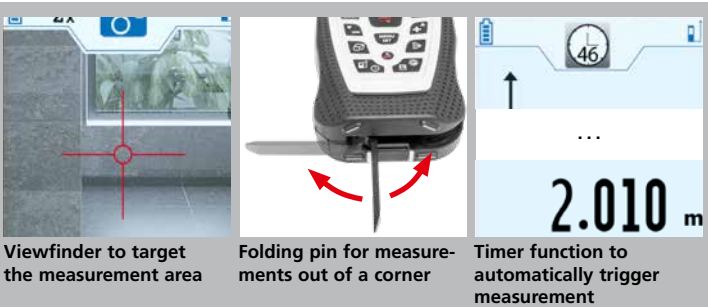


- **Point-precise measuring with laser** to determine lengths exactly
- **Camera function** with digital zoom
- **Min/Max function** to determine diagonals, verticals and horizontals
- **The area and volume functions** permit the acquisition of room sizes, for example to calculate material quantities
- **Pythagoras measurement function and angle function**
- **360° inclination sensor** for determining the horizontal and vertical distance
- Simple assessment of room perimeter with the **addition and subtraction functions**
- The **wall surface function** automatically adds up surfaces by measuring the lengths of walls as well as their height once.
- **Stake out function** for marking off defined lengths
- **Digital bubble level** to align the measuring device
- **High measuring accuracy** up to 80 m:  $\pm 2 \text{ mm}^*$
- **4 selectable measurement reference points:** front, tripod, rear and pin
- 1/4" tripod connection
- USB interface to charge the NiMH batteries
- Illuminated colour LCD
- Internal measured value memory

#### TECHNICAL DATA

<b>ACCURACY</b> $\pm 2 \text{ mm}$ (typical)*
<b>MEASUREMENT RANGE</b> <b>max. 80 m**</b>
<b>MINIMAL RANGE</b> 0,05 m
<b>LASER</b> Class 2 < 1mW
<b>LASER WAVELENGTH</b> 635 nm
<b>OPERATING CONDITIONS</b> 0°C ... 40°C
<b>STORAGE CONDITIONS</b> -20°C ... 60°C
<b>UNIT</b> (selectable) m / ft / '"/inch
<b>FUNCTIONS</b> distances, min./max./continuous measurement, areas, volumes, addition, subtraction function, wall surface function, angle function 1***, Pythagoras 1 + 2 + 3, 360° inclination sensor, stake out/timer function, digital bubble level, camera
<b>POWER SUPPLY</b> Rechargeable batteries 3x NiMH, type AAA
<b>DIMENSIONS</b> (W x H x D) 59 x 136 x 29 mm
<b>WEIGHT</b> with batteries 172 g

\* See operating instructions for specific accuracies  
 \*\* at max. 10,000 lux  
 \*\*\* In combination with 360° inclination sensor



Viewfinder to target the measurement area

Folding pin for measurements out of a corner

Timer function to automatically trigger measurement

ARTICLE	ARTICLE NO	EAN-CODE	PU
DistanceMaster Vision	080.980A	4 021563 703661	5



#### DistanceMaster Vision

- inclusive carrying case
- + rechargeable batteries (3 x NiMH type, AAA)
- + softbag
- + USB cable

**Packaging dimension** (W x H x D)  
155 x 265 x 81 mm

